

LANDSCAPE ARCHITECTURE
LaGuardia Design Group
www.laguariadesign.com

03.10.2023

Verdi Square
New York, NY



A COMPACTION AT MEADOW UNDERSTORY



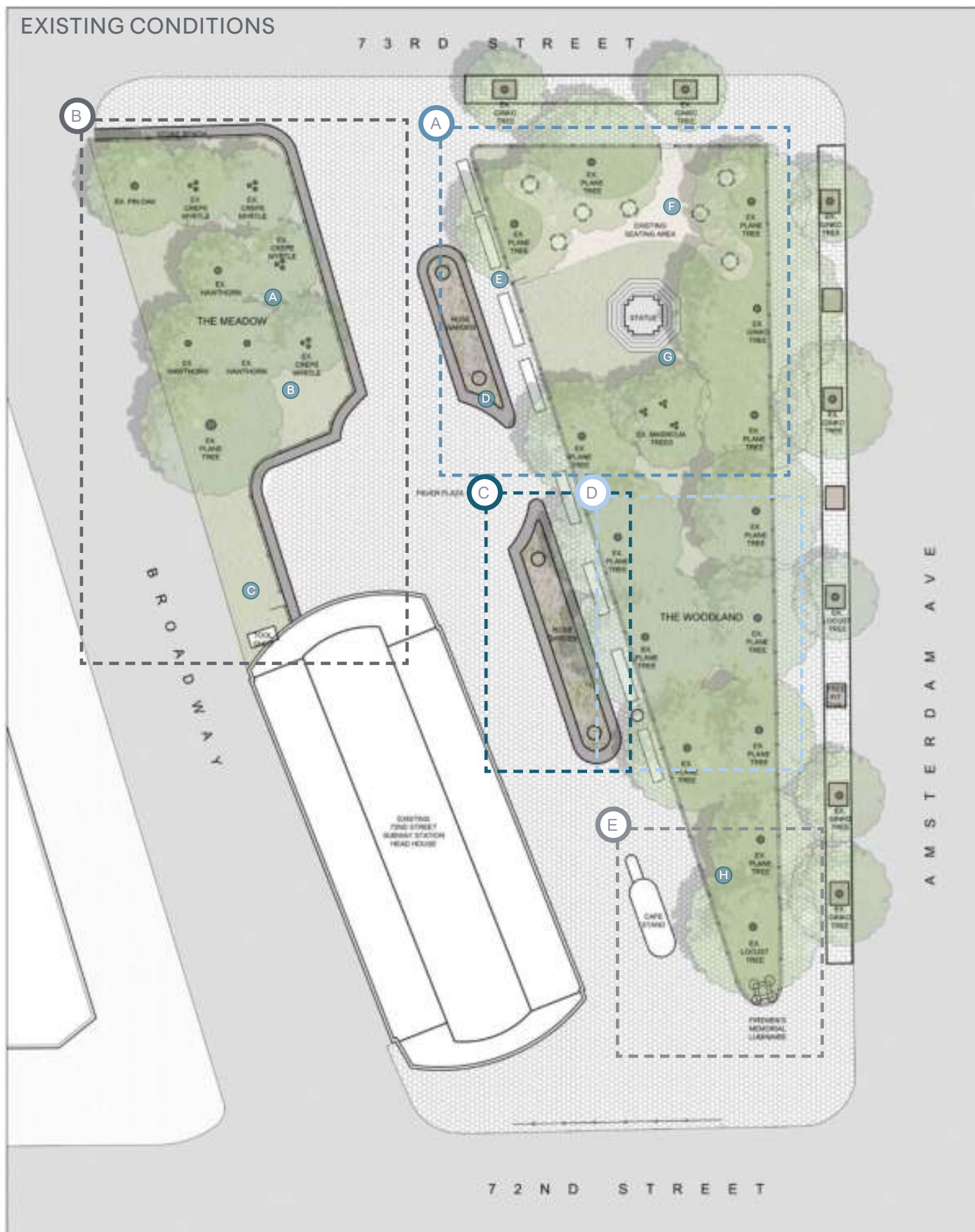
B COMPACTION AT MEADOW UNDERSTORY



C MEADOW PATH FROM SERVICE ENTRANCE



D ROSE GARDEN PLANTER BED



E IMPROVE ADA ACCESSIBILITY TO SEATING AREA



F IMPROVE SEATING AREA SURFACE



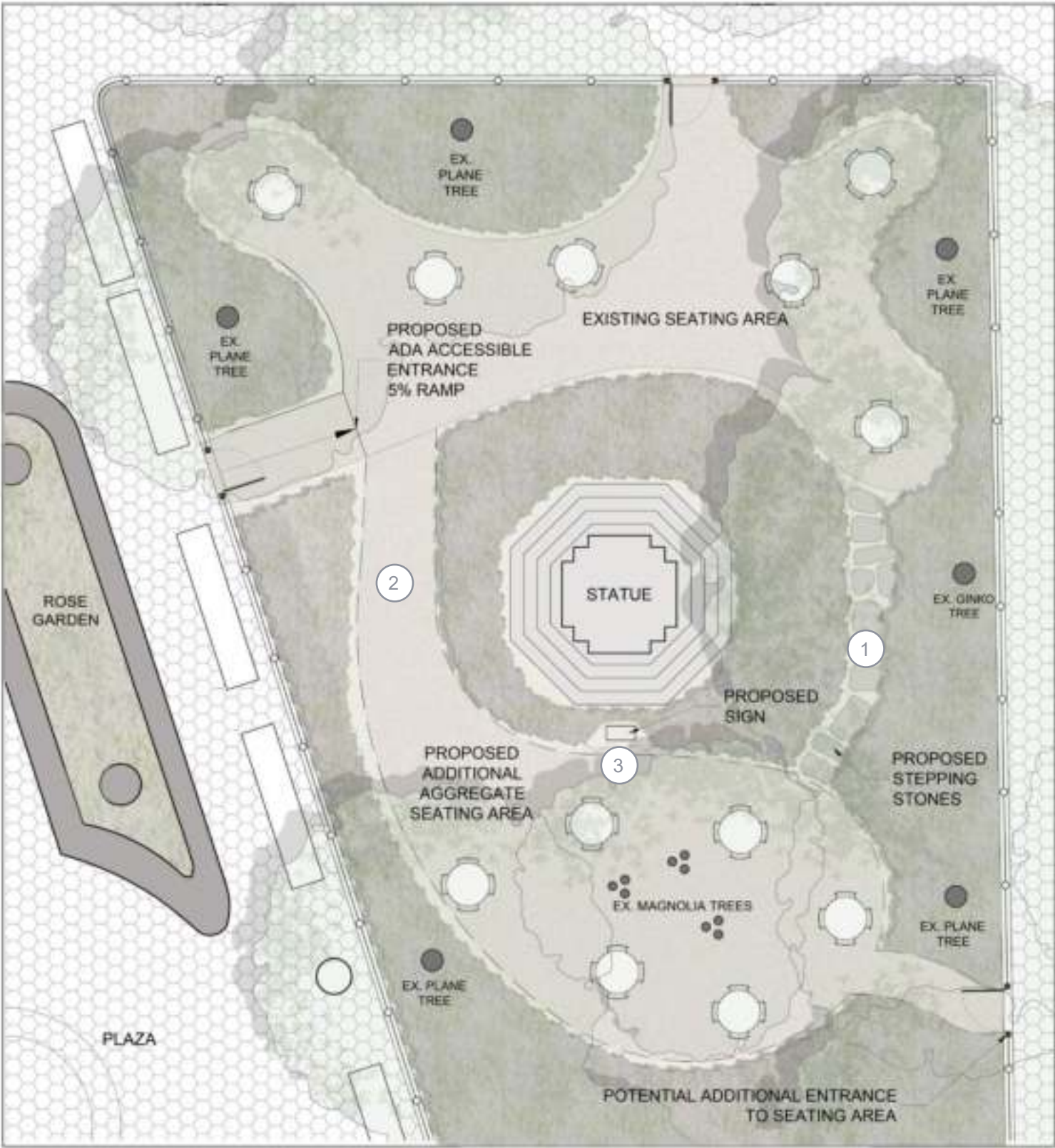
G STATUE BASE PLANTING



H HEAVY COMPACTION AND SURFACE ROOTS AT THE "THE POINT"



A. THE WOODLAND SEATING - PROPOSED SITE PLAN



STEPPING STONES



REINFORCED GEOPAVE



INTERPRETIVE SIGN



B. THE MEADOW - PERENNIAL MATRIX PLANTING



PIET OUDOLF PERENNIAL MATRIX GARDEN

The NYC Parks Native Species Planting Guide for New York City provides a robust list of plants that are best suited for survival in unique city settings while also providing a broad range of ecosystem services. These plants can be sourced through the municipal Greenbelt Native Plant Center.

THE MEADOW is a partially shady site with heavy understory compaction. The following plant palettes follow Planting Guide recommendations for understory and herbaceous diversity in established projects with tree canopies.

GRAMINOIDS

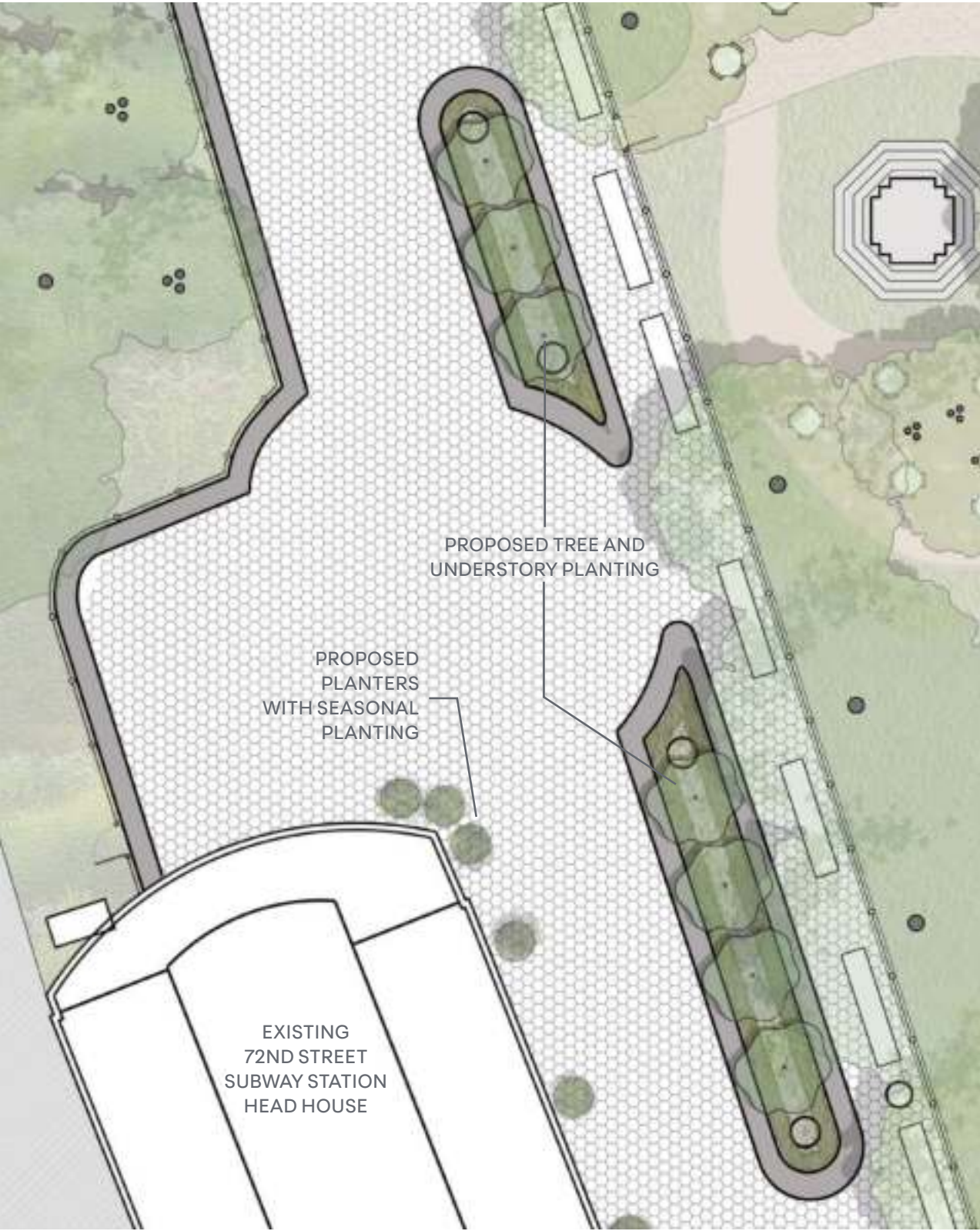
- CAREX PENNSYLVANICA - PENNSYLVANIA SEDGE
- ELYMUS HYSTRIX - EASTERN BOTTLEBRUSH GRASS
- SESLERIA AUTUMNALIS - AUTUMN MOORE GRASS

FORBS

- ALLIUM CANADENSE - WILD GARLIC
- ASCLEPIAS SYRIACA - COMMON MILKWEED
- MONARDA FISTULOSA - WILD BERGAMOT
- PYCNANTHEMUM TENUIFOLIUM - NARROWLEAF MOUNTAIN MINT
- GERANIUM MACULATUM - WILD GERANIUM
- ECHINACEA PURPUREA - PURPLE CONEFLOWER
- PEROVSKIA ATRIPLICIFOLIOA - RUSSIAN SAGE



C. THE ROSE GARDEN - PROPOSED PLANTING



The existing rose garden beds present an opportunity for shaded seating and seasonal planting. Small caliper tree planting paired with understory boxwood hedge and seasonal blooms are a maintenance friendly design for the rose garden planting beds. Additional proposed moveable planters flank the subway station head house.

SHRUB
BUXUS SEMPERVIRENS - AMERICAN BOXWOOD

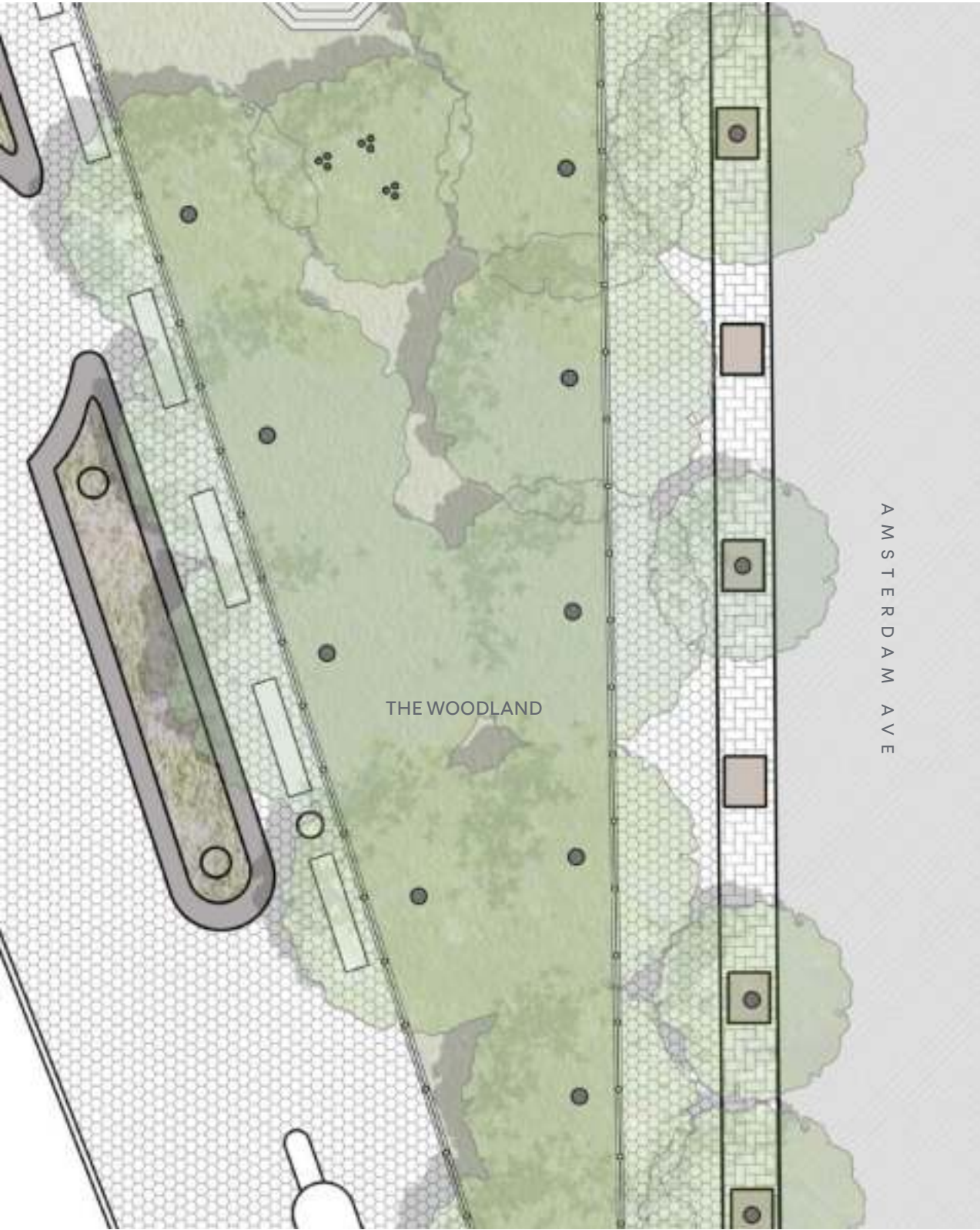
TREE OPTIONS
TILIA AMERICANA- AMERICAN LINDEN
TILIA TOMENTOSA- SILVER LINDEN
BETULA POPULIFOLIA- GREY BIRCH



PLAZA PLANTERS



D. THE WOODLAND - PLANTING RECOMMENDATION



At THE WOODLAND a native fern groundcover with shrubs and flowering forbs complements the existing Woodland planting palette of red twig dogwood, witch hazel, magnolia, red cedar, winterberry, spice bush, and summersweet.

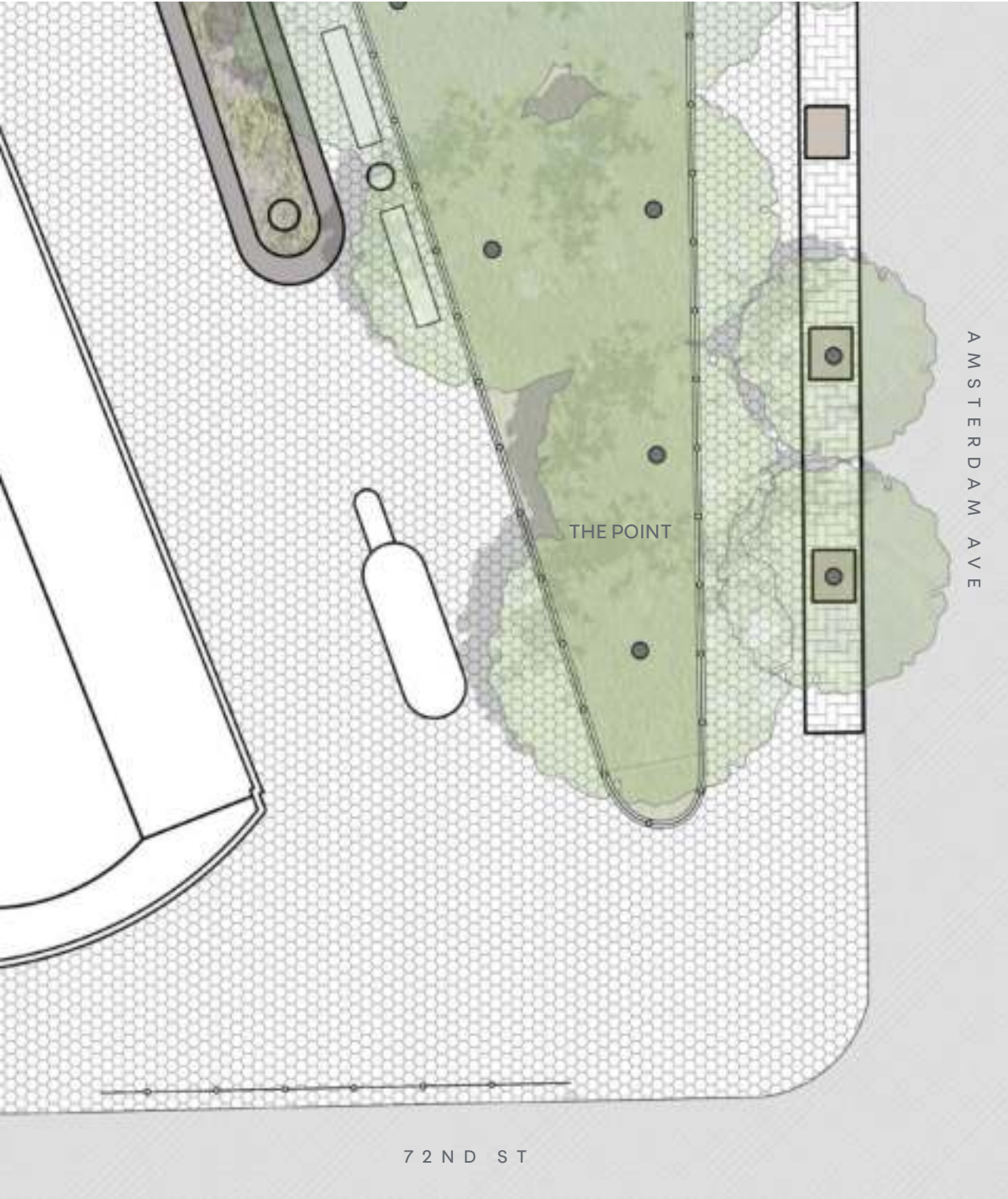
Fern and sedge groundcvoers will complement existing shrub planting.

- FERNS**
THELYPTERIS NOVEBORACENSIS - NEW YORK FERN
DENNSTAEDTIA PUNCTILOBULA - HAYSCENTED FERN

- GRAMINOIDS**
CAREX PENNSYLVANICA - PENNSYLVANIA SEDGE



E. THE POINT - PLANTING RECOMMENDATION



THE POINT at 72nd St and Amsterdam Ave is a shady, compacted area with extensive root systems of the existing Locust and Plane trees. Planting here must tolerate partial shade, shallow soils, salinity in winter, and low nutrient levels.

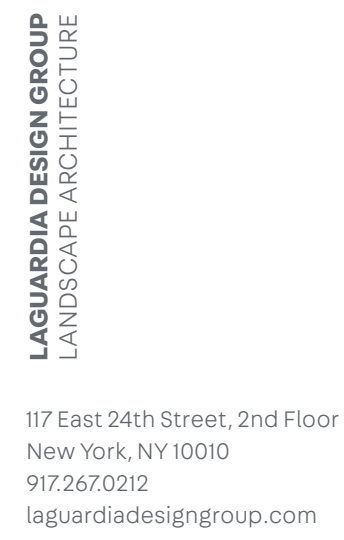
Plants from the ‘Successional Old Fields and Urban Lots’ category are some of the toughest native plants and can thrive in these conditions.

GRAMINOIDS
PURPLE LOVEGRASS
ERAGROSTIS SPECTABILIS

SHRUBS
SWEETFERN
COMPTONIA PEREGRINA

FORBS
LARGE BRACTED PLANTAIN
PLANTAGO ARISTATA





03.10.23

